

Life on the Edge point

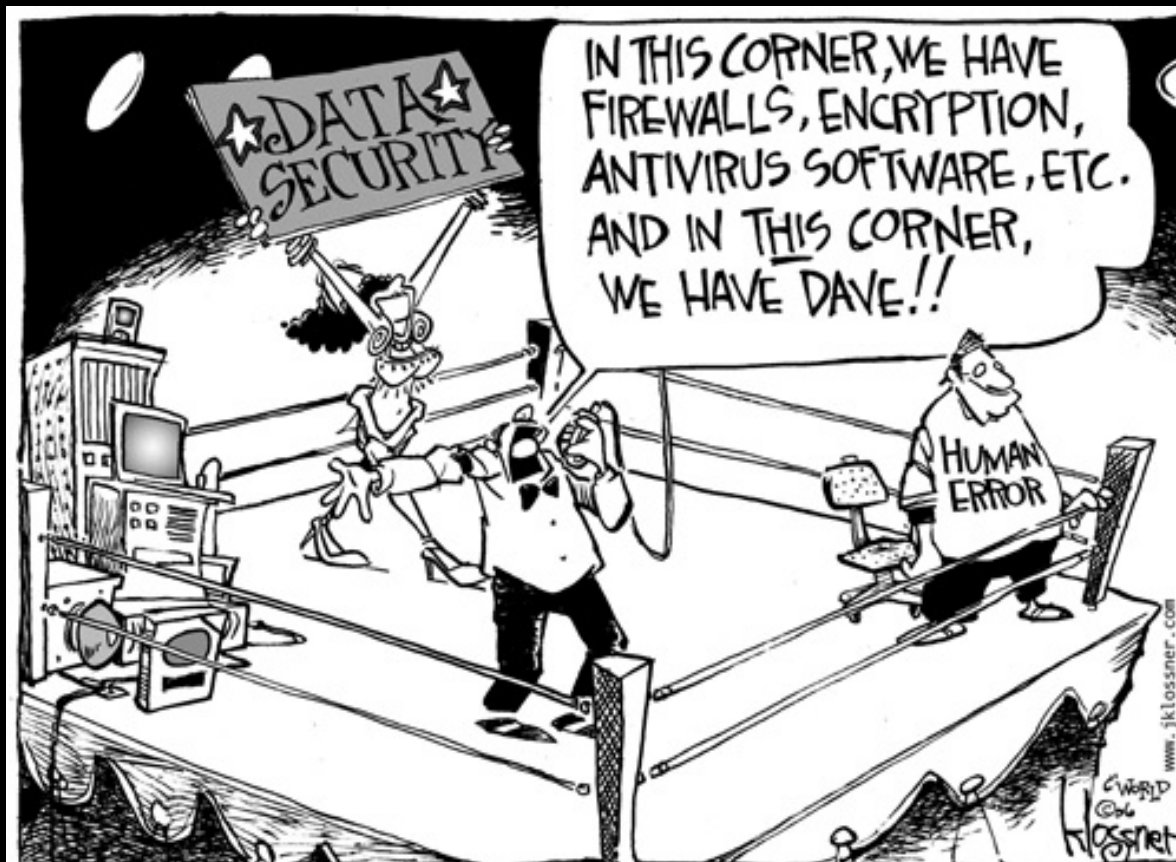
Winning the Battle against Cyber attacks

John Beal – Endpoint Security and SaaS Leader

Security Systems Software

jbeal@ca.ibm.com





RISK INNOVATION



73% of firms discovered cloud usage outside of security policies



11.6M mobile devices are infected at any given time

Sources: 2013, IDC US Cloud Security Survey; 2015, IBM X-Force



What are we doing about it?

- Adding another tool
- Hoping it's not me
- Building more barricades
- Skipping the basics
- Ignoring privileges
- Blocking the cloud
- Betting on BYOS



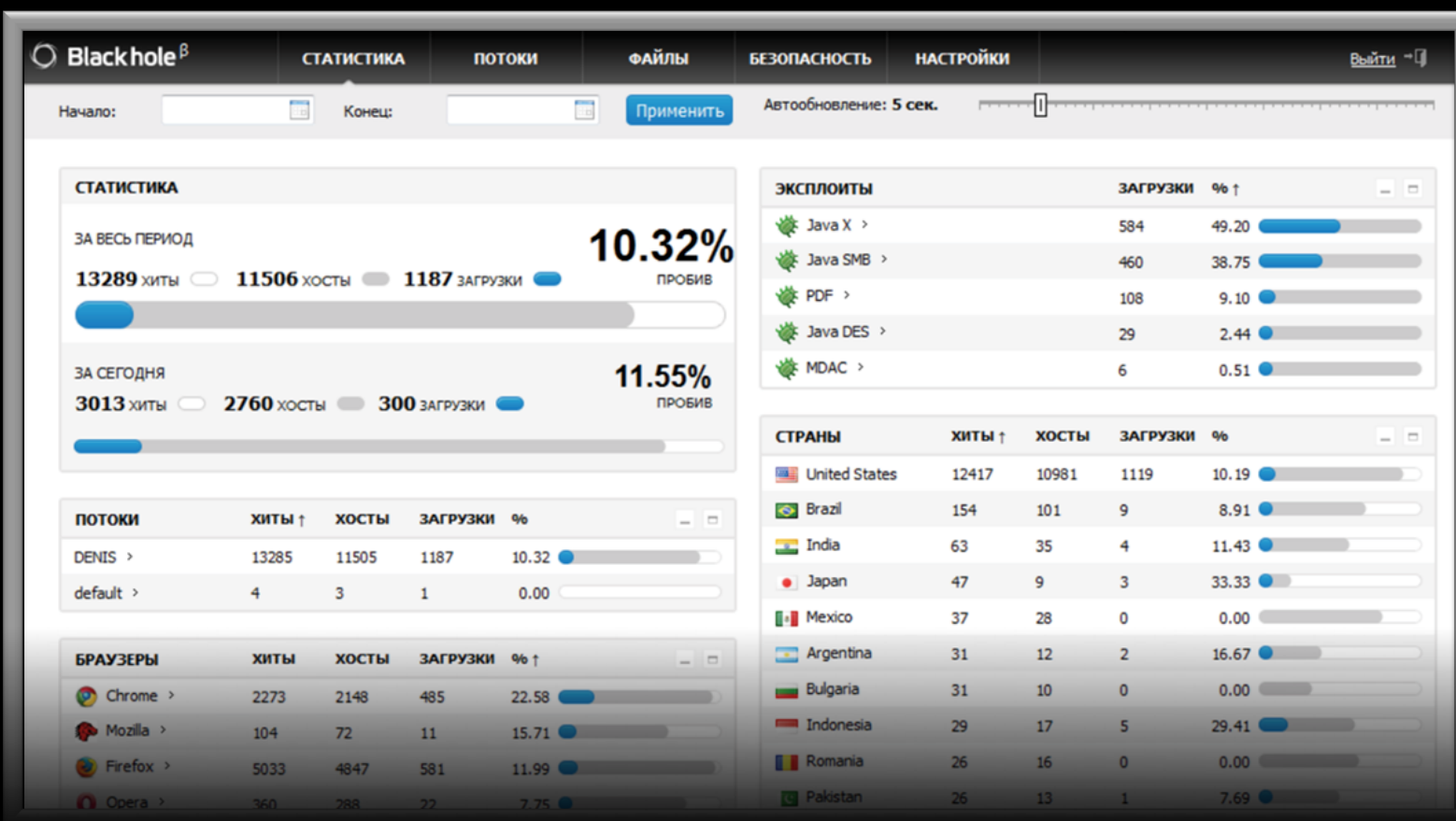


A NEW APPROACH TO SECURITY

Security requires
Collaboration

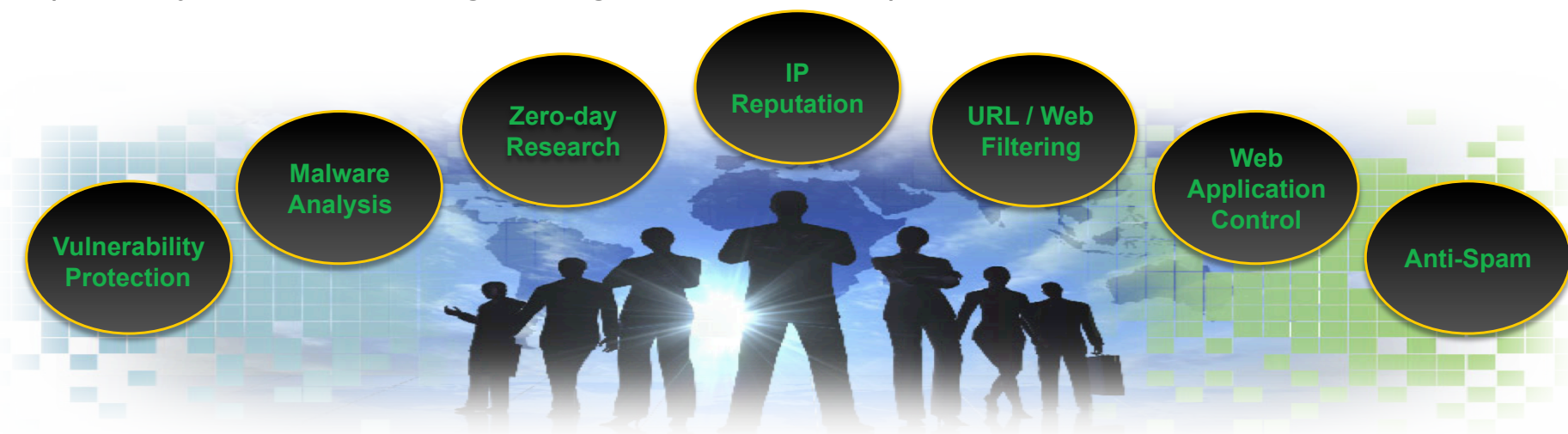


Cyber criminals use BUSINESS INTELLIGENCE



IBM X-Force® Research and Development

Expert analysis and data sharing on the global threat landscape

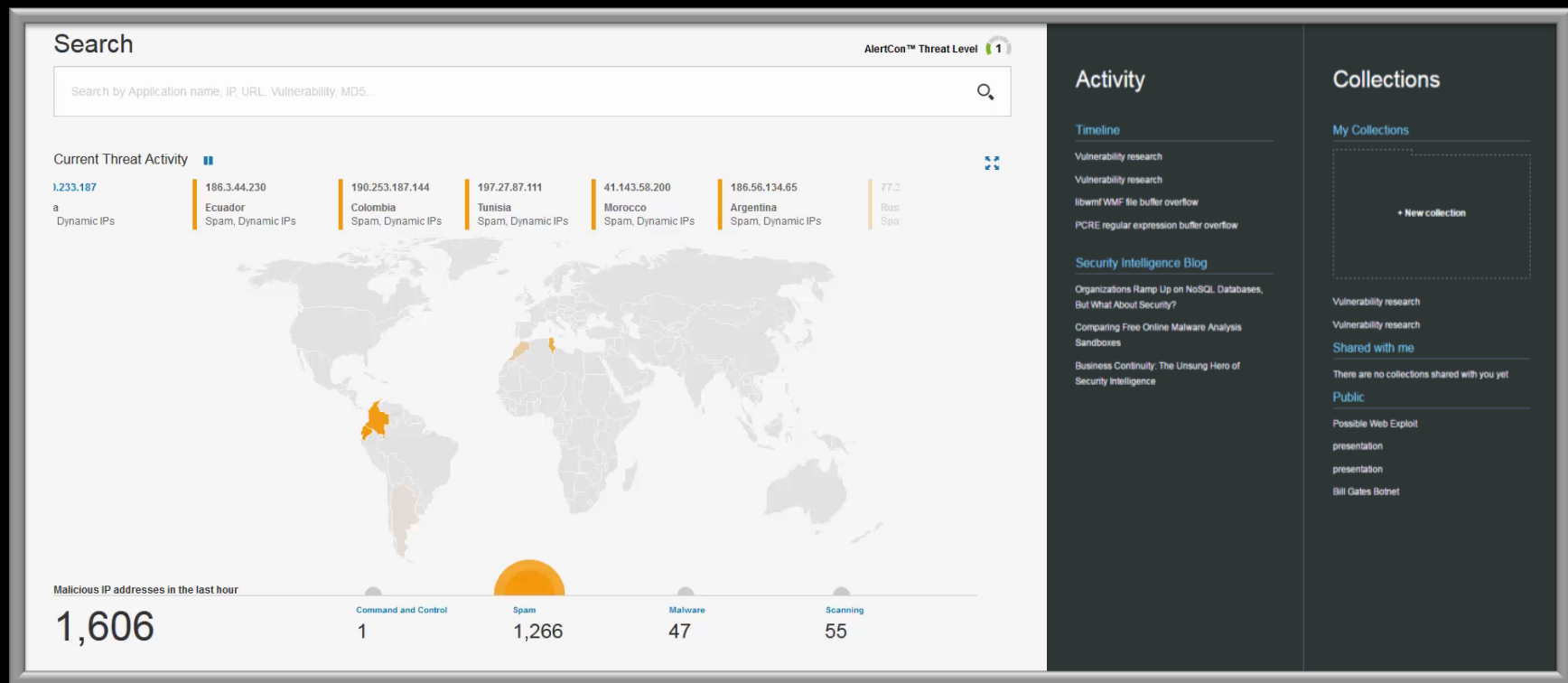


The IBM X-Force Mission

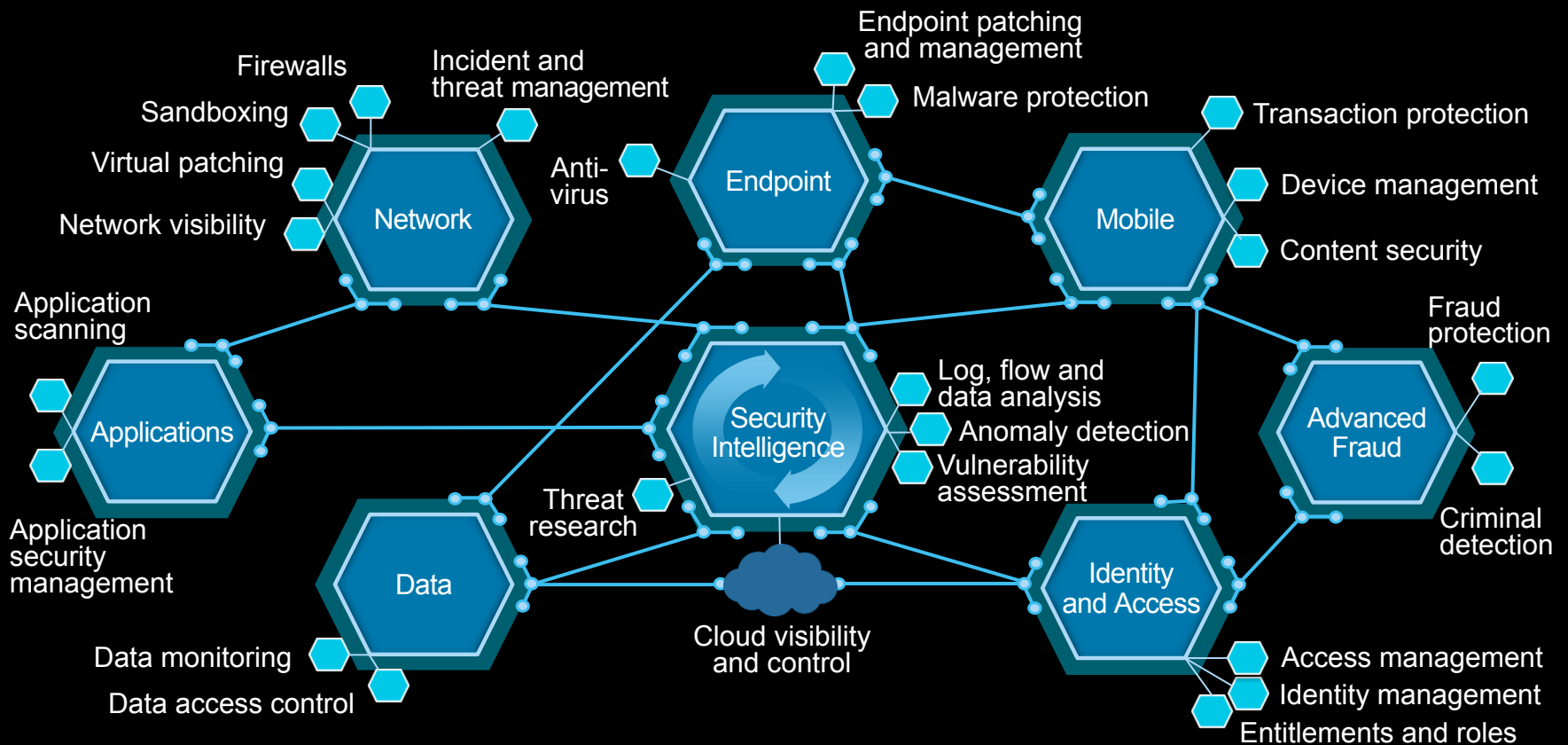
- **Monitor** and evaluate the rapidly changing threat landscape
- **Research** new attack techniques and develop protection for tomorrow's security challenges
- **Educate** our customers and the general public
- **Integrate** and distribute Threat Protection and Intelligence to make IBM solutions smarter

Collaborate more effectively than the hackers

xforce.ibmcloud.com



Establish security as an immune system



IBM understands the demands of managing a global heterogeneous IT infrastructure

- **433,000 IBM employees** in over 120 countries.
- Deployment to over **750,000 endpoints**
- Drive savings well above our initial **US \$10million estimate**
- A **78 per cent decrease** in endpoint security issues
- IBM patches itself in under 48Hrs
- IBM maintains 24/7 Security Compliance on or off the network.



IBM's Unified Endpoint Management :

Any device.

Identify and respond to any device accessing your corporate data—regardless of what type it is or whether it's personal or corporate-owned.

Any location.

Manage and secure every unique device—whether it's on or off your corporate network—anywhere on the planet.

Any time.

Get real-time visibility and control of every device on your network. Find and fix problems in minutes—before they become major disruptions.



Clients often discover
35% more endpoints
connecting to their corporate
data than previously identified



250,000
The number of endpoints
that can be managed in any
location across the globe—
all from a single server



Up to 90% faster
deployment time for
patches and upgrades

IBM Bigfix's Unique Architecture:

Single intelligent agent

- Continuous self-assessment
- Continuous policy enforcement
- Minimal system impact (<2% CPU, <10MB RAM)



Single server and console

- Highly secure, highly available
- Aggregates data, analyzes and reports
- Manages up to 250K endpoints per server



Flexible policy language (Fixlets)

- Thousands of out-of-the-box policies
- Best practices for operations and security
- Simple custom policy authoring
- Highly extensible/applicable across all platforms



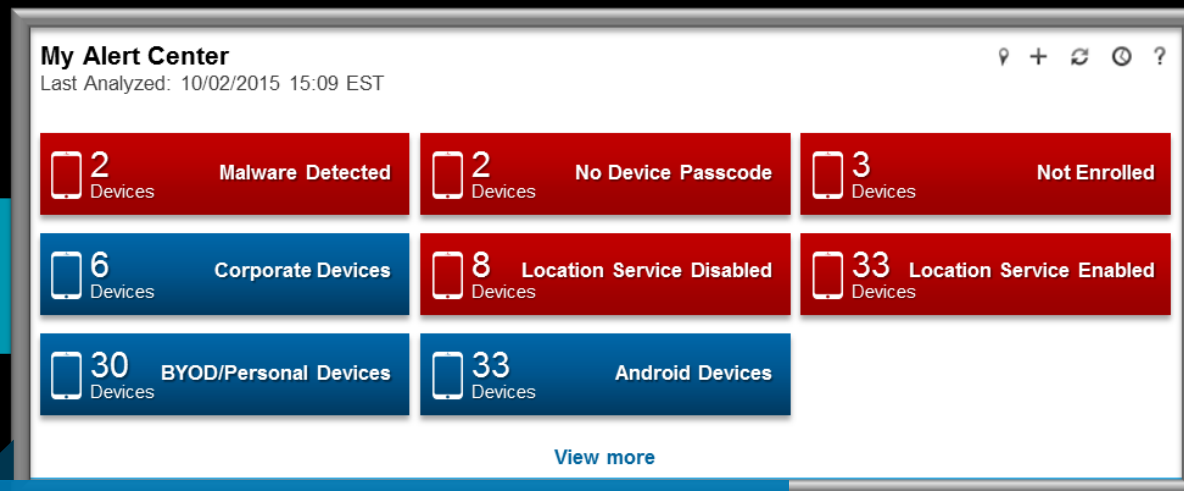
Lightweight, easily configurable infrastructure

- Designate agent as a relay or discovery point in minutes
- Provides built-in redundancy
- Leverages existing systems/shared infrastructure

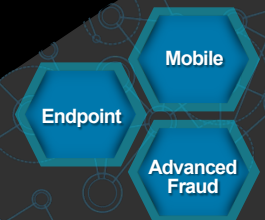


Roll out security on 100,000 devices in 6 weeks

IBM internal example



Enforce mobile compliance



MobileFirst Protect: enabling devices, apps, and content



- ✓ Proven delivery approach with both on-premise and cloud-based EMM offering
- ✓ Securely enables mobile productivity without burdening end-user experience
- ✓ Seamlessly integrates with all of your existing infrastructure
- ✓ Simple & fast with an exceptional customer experience

Because of HIPAA issues regarding personal student information and records, the ability to remotely lock and wipe any lost devices provides an added layer of security to iPads used in therapy and other clinical settings. We feel confident knowing our devices are always secure.

~Beth Greer, Bancroft



Client: Bancroft

300+

Number of iPads used by clients and staff

15 - 20

Hours of monthly IT time saved

<5 Minutes

The amount of time to securely enroll a new device

300+

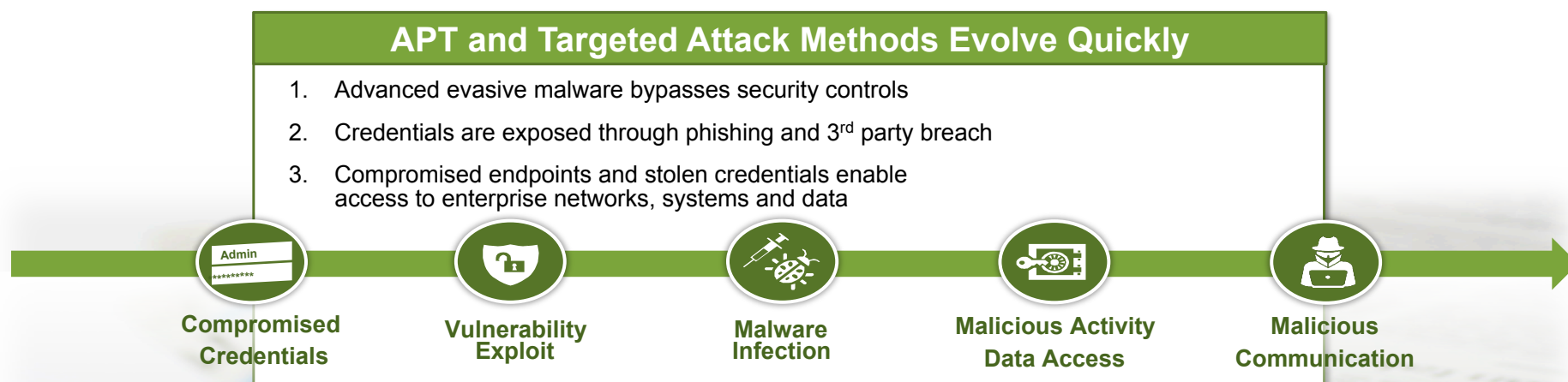
The number of educational and clinical apps managed

1

Number of consoles needed to securely manage all iPads

Advanced Malware & Endpoint Protection

Despite existing controls, employee endpoints are compromised and are used as pivot points into the enterprise network



Who Hacked Sony? New Report Raises More Questions

JPMorgan Chase Breach Puts Renewed Focus on Malware A

A \$1Billion APT Attack – Carbanak May Just Be the Biggest Cyber Heist Ever

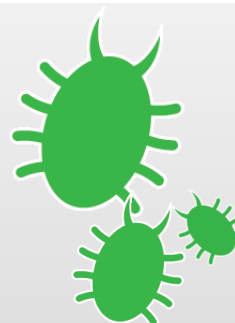
As Mobile Grows, Threats Grow



In 2014 the number of mobile phones (**7.3 billion**) will exceed the number of people on the planet (**7 billion**)¹



138 billion apps were downloaded in 2014².
By 2017 **50%** of employers will require BYOD³.

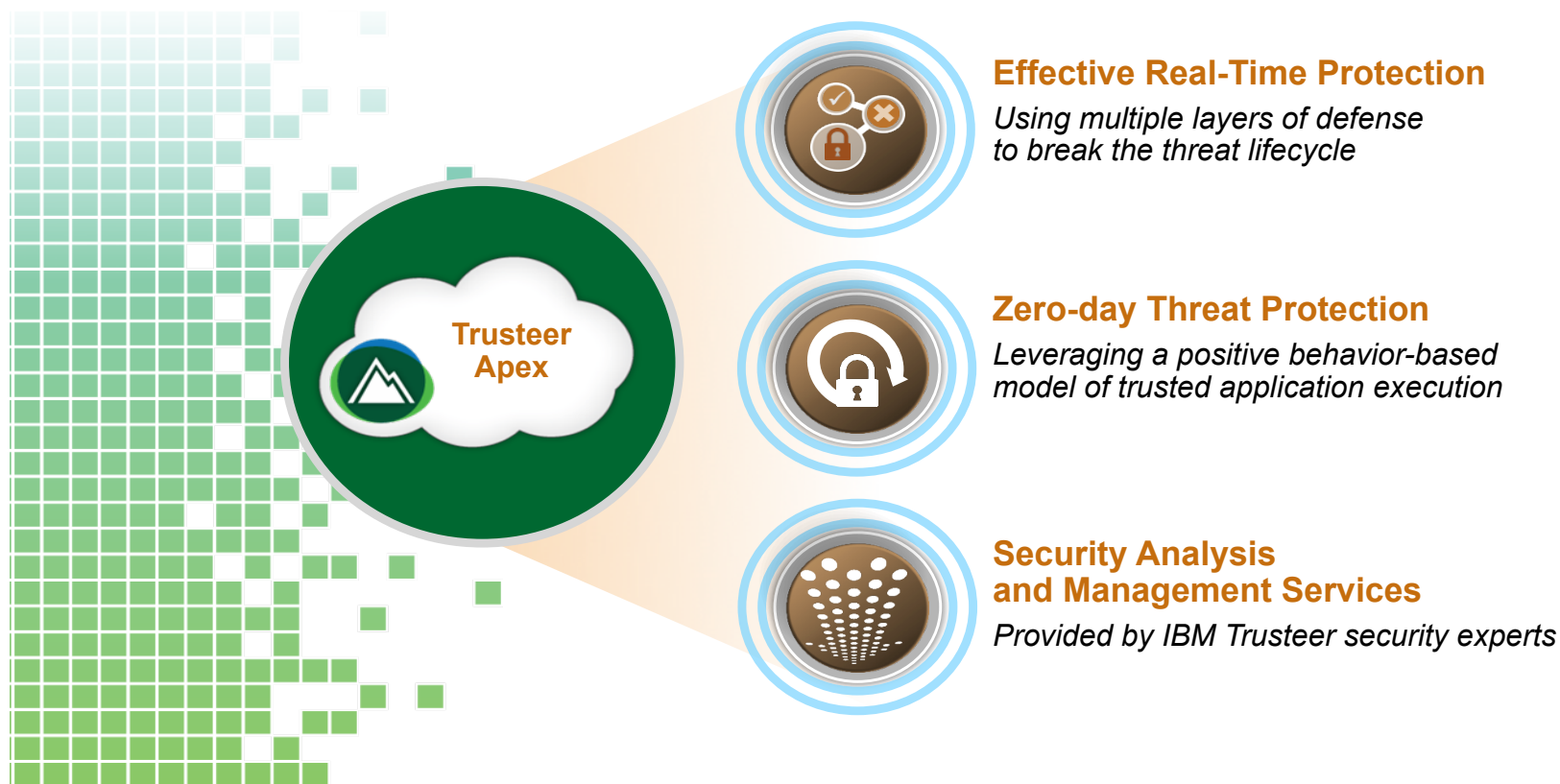


Mobile malware is growing. Malicious code is infecting **>11.6 million** mobile devices at any given time⁴.



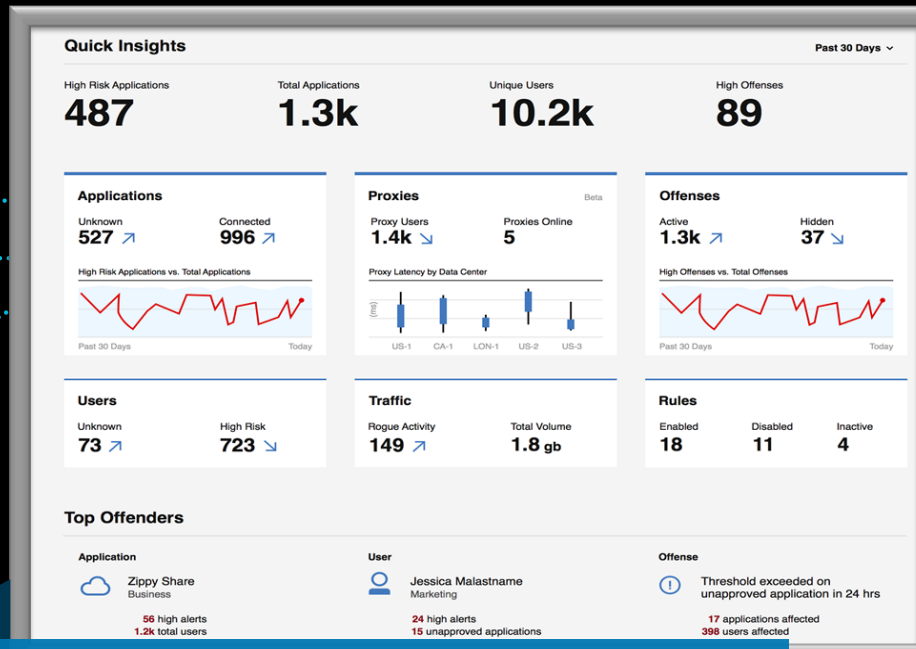
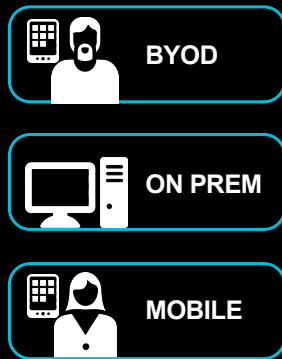
Mobile devices and the apps we rely on are under attack. **97%** and **87%** of top paid Android and iOS apps have been hacked⁵.

Preemptive, multi-layered protection against advanced malware & credentials theft



Embrace the cloud but not the risk

EMPLOYEES



Securely deploy cloud services

RISKY APPS



APPROVED APPS



Cloud

A new SaaS solution to help securely deploy cloud services



Why IBM?

IBM's Unified Device Mgt, is a UNIQUE solution in the market today

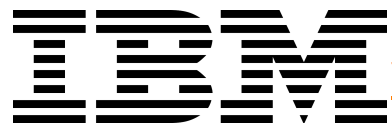
- True Cross platform solution: 90 supported OS'es: Unix, Linux, Mac, Windows and Mobile.
- Real Time Visibility and Control: distributed Intelligence. **This is NOT Scan and Poll!**
- 1 "Pane of glass" single console view for everything, across everything
- Untouched Scalability: 250,000 end points, 1 single management server.

Why does that matter and Who cares?

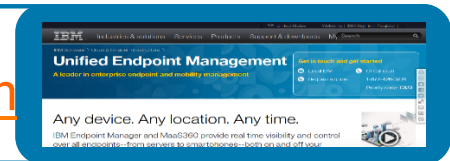
- Whether server, desktop, or both: we typically replace 8-12 other agent based tools Tool consolidation addresses: Silo management, visibility gaps, and growing costs of multiple tools (one customer has 62 different tools to manage servers)
- Unified Device Management is extremely lightweight and fast to deploy: services impact is light and predictable
- Customers continue to struggle with security Threats. IBM is the cure!

Incumbent systems can't 'see' all endpoints – And Customers can't fix what they can't see!

For more information



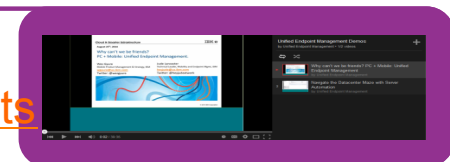
www.unifiedendpointmanagement.com



<https://twitter.com/IBMEndpoint>



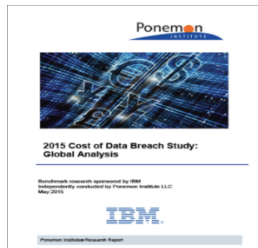
<https://www.youtube.com/IBMEndpoint/playlists>



Learn more about IBM Security



Learn more! Download the
[2015 Cyber Security Intelligence Index](#)



2015 Ponemon Cost of Data Breach
<http://www.ibm.com/security/data-breach>



Download: IDC Canada: Determining How
Much to Spend on your IT Security.
<https://ibm.biz/IDCWPEN>



Connect with our experts



Blog  Security Intelligence
SecurityIntelligence.com



Follow us on Twitter
[@ibmsecurity](https://twitter.com/ibmsecurity)



IBM Security

Intelligence. Integration. Expertise.